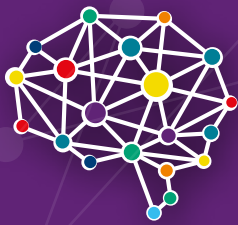


## Transform **Human Interactions** into **Actionable Intelligence** with Leading **Behavioural Biometrics**

Leverage superior behavioural biometrics technology to provide a seamless experience for genuine users, actively detect threats and confidently protect your customers.

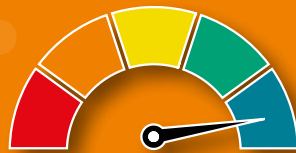


**LexisNexis® BehavioSec®** is a leading solution for behavioural biometrics technology that expands your ability to trust digital transactions, reduce fraud and improve the experience of your consumers.



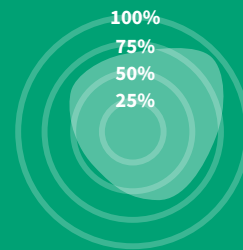
### **Behavioural Biometrics Analysis**

The behavioural data is compared to the unique profile of the user in near real time.



### **Behavioural Scores**

Verify customers, detect high-risk scenarios, and make better, smarter, and more timely decisions with our behavioural scores and insights.



### **Deep Intelligence**

The scores are delivered with detailed intelligence on human device interactions. This is combined with digital identity intelligence to quickly achieve situational awareness.

# Building **Identity Trust** Through the Customer **Journey**

## New Account Creation and Onboarding: **Accelerate conversion rates**

- Monitor behavioural anomalies to detect potential patterns that could be indicative of fraud.
- Detect application and data familiarity anomalies associated with account opening fraud.
- Build a trusted baseline of what's considered normal behaviour in an environment utilising sophisticated machine learning.

## Account Login: **Verify individual identities**

- Analyse each session for a wide set of risk and trust factors.
- Recognise returning users by verifying behaviour with their past behavioural profile.
- Flag anomalies, evaluate risk and enable great experience for genuine users.

## Account Management: **Protect all high-risk touchpoints**

- Adopt a risk-based authentication approach across various consumer touchpoints including change of passwords, adding beneficiaries, and others.
- Rely on our state-of-the-art passive authentication to improve trust across the user journey.

## Transaction Fraud and Social Engineering: **Detect even the most complex payment fraud schemes**

- Detect payment fraud by identifying behaviours that do not fit a customer's profile.
- Incorporate new detection mechanisms that scan user activity for behavioural signs of scams, coaching or coercion.

## BehavioSec® **Benefits**

- **Build Trust** and Improve **Fraud Detection**
- Enable **Adaptive Authentication** and Deliver a **Positive User Experience**
- **Enhance Decisioning** with **Behavioural Insights**
- Adopt a **Clear-box Approach**
- Ensure **Privacy** with the **Highest Security Standards**
- Combine **Digital Identity Intelligence** with **Behavioural Biometrics** in a Single Seamless Platform

[» Learn More](#)



### About LexisNexis® Risk Solutions

LexisNexis® Risk Solutions harnesses the power of data and advanced analytics to provide insights that help businesses and governmental entities reduce risk and improve decisions to benefit people around the globe. We provide data and technology solutions for a wide range of industries including insurance, financial services, healthcare and government. Headquartered in metro Atlanta, Georgia, we have offices throughout the world and are part of RELX (LSE: REL/NYSE: RELX), a global provider of information-based analytics and decision tools for professional and business customers. For more information, please visit [www.risk.lexisnexis.com](http://www.risk.lexisnexis.com) and [www.relx.com](http://www.relx.com).

Our solutions assist organisations with preventing financial crime, achieving regulatory compliance, mitigating business risk, improving operational efficiencies and enhancing profitability.

This document is for informational purposes only and does not guarantee the functionality or features of any LexisNexis Risk Solutions products identified. LexisNexis Risk Solutions does not represent nor warrant that this document is complete or error free.

LexisNexis, LexID and the Knowledge Burst logo are registered trademarks of RELX Inc. HPCC Systems is a registered trademark of LexisNexis Risk Data Management Inc. ID Analytics is a registered trademark of Altiris, Inc. Emailage is a registered trademark of Emailage Corp. ThreatMetrix, Digital Identity Network, and SmartID are registered trademarks of ThreatMetrix, Inc. Accuity is a registered trademark of Accuity, Inc. WorldCompliance is a registered trademark of World Compliance, Inc. TraceSmart is a registered trademark of Tracesmart Limited. Wunelli is a registered trademark of Wunelli Limited. TrueID and Bridger Insight are registered trademarks of LexisNexis Risk Solutions Inc. is a registered trademark of LexisNexis Risk Solutions Inc. Firco is a trademark of Fircosoft. Bankers Almanac registered trademark of LNRS Data Services Limited. Other products and services may be trademarks or registered trademarks of their respective companies.

Copyright © 2023 LexisNexis Risk Solutions.

NXR15816-00-0123-EN-US